

RESOLUTION NO. 29600

A RESOLUTION AUTHORIZING THE CHATTANOOGA  
HAMILTON COUNTY REGIONAL PLANNING AGENCY TO  
COORDINATE THE DEVELOPMENT OF AN AIRPORT  
DISTRICT MASTER PLAN.

---

WHEREAS, the Chattanooga Metropolitan Airport is a key gateway to the City of Chattanooga and has seen rapid growth in the past four years; and

WHEREAS, the Airport continues to grow as a major employment center and transportation hub and it is estimated that there will be impacts on surrounding infrastructure and opportunities for economic development; and

WHEREAS, a planning study of the broader Airport area is needed to aid the City in assessing needed infrastructure improvements and accommodating growth while protecting existing neighborhoods; and

WHEREAS, the Chattanooga Airport Authority will retain the consultant with the assistance of RPA staff; and

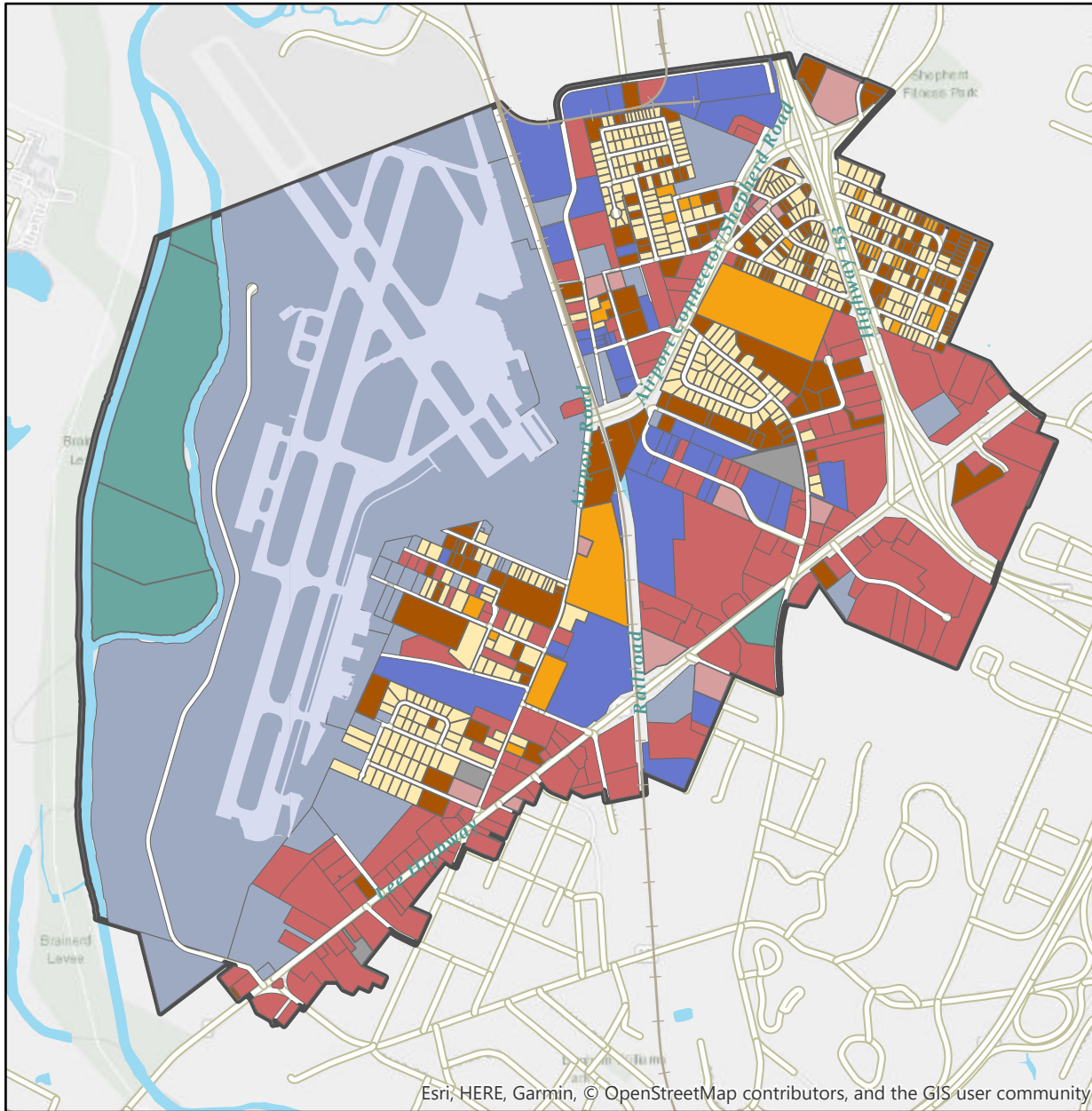
WHEREAS, the Regional Planning Agency will coordinate work with the consultant to conduct analysis, conduct community meeting(s) for the purpose of obtaining public input, and develop the plan draft; and

WHEREAS, a land use planning process will provide guidance to area stakeholders and appointed and elected officials about future land use and development patterns in the area;

NOW, THEREFORE, BE IT RESOLVED BY THE CITY COUNCIL OF THE CITY OF CHATTANOOGA, TENNESSEE, that the Chattanooga-Hamilton County Regional Planning Agency be and is hereby authorized to coordinate the development of an Airport District Master Plan within the area noted in the attached map.

ADOPTED: August 28, 2018.

/mem



Esri, HERE, Garmin, © OpenStreetMap contributors, and the GIS user community

## AIRPORT STUDY LAND USES

- Commercial
- Industrial
- Natural Resources Related
- Institutional
- Mixed-Use
- Recreational
- Residential Single Family
- Transportation
- Residential Multi Family
- Utilities
- Vacant
- Needs to Be Verified
- Agricultural & Preservation
- Utilities & Communication
- <all other values>
- Airport District Study Boundary
- Water Bodies
- Roads
- Rail

